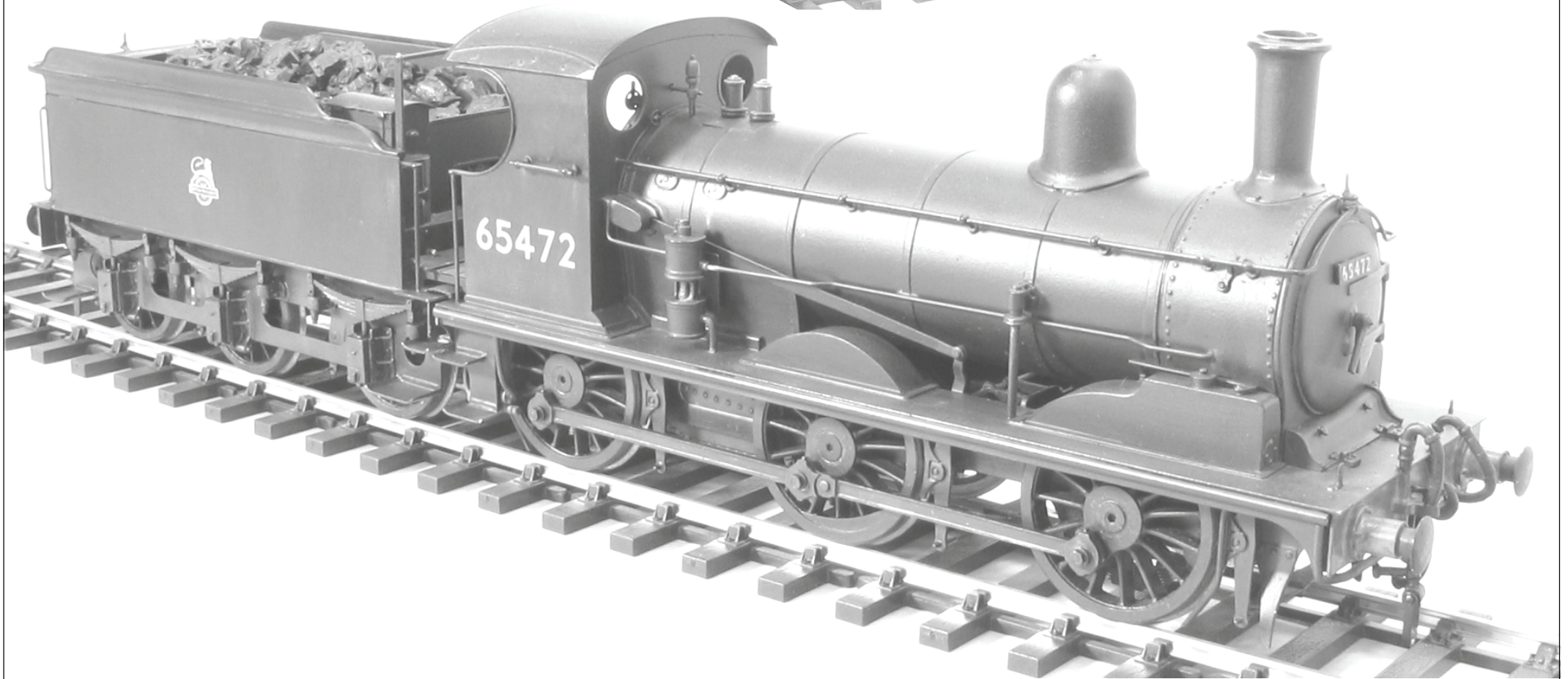


CONNOISSEUR MODELS

London & North Eastern Railway
Class J15





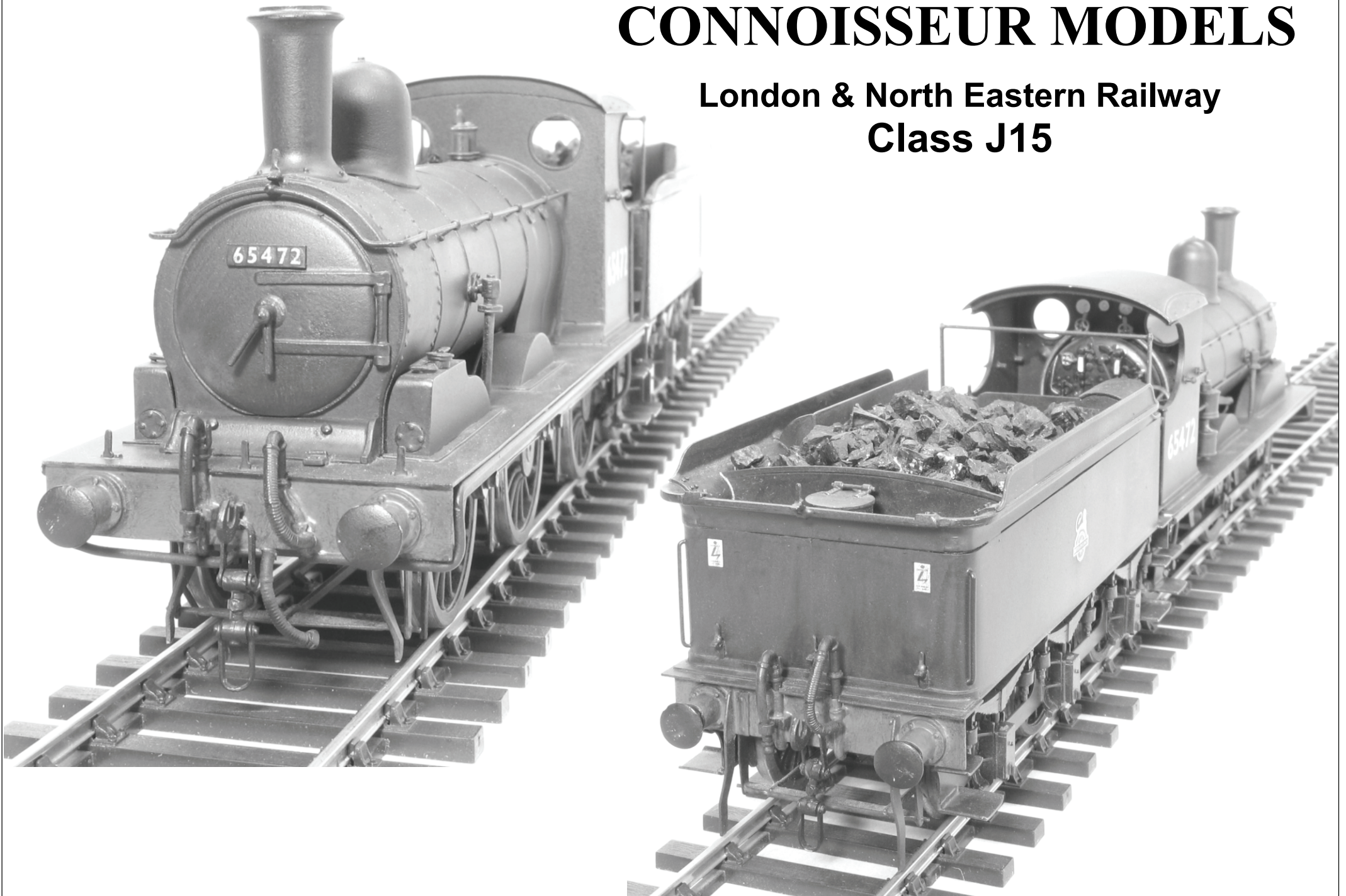
CONNOISSEUR MODELS

London & North Eastern Railway
Class J15

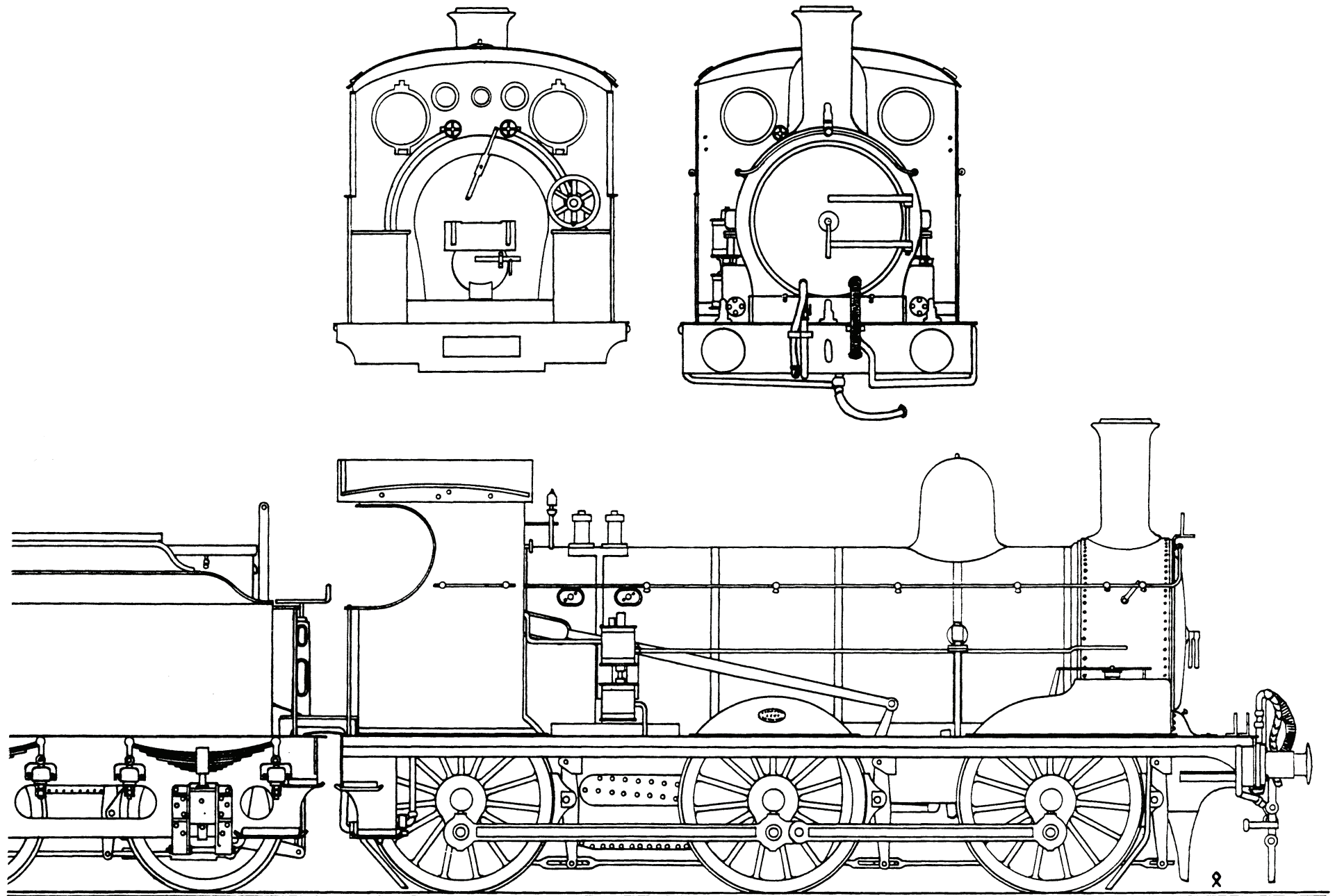


CONNOISSEUR MODELS

London & North Eastern Railway
Class J15



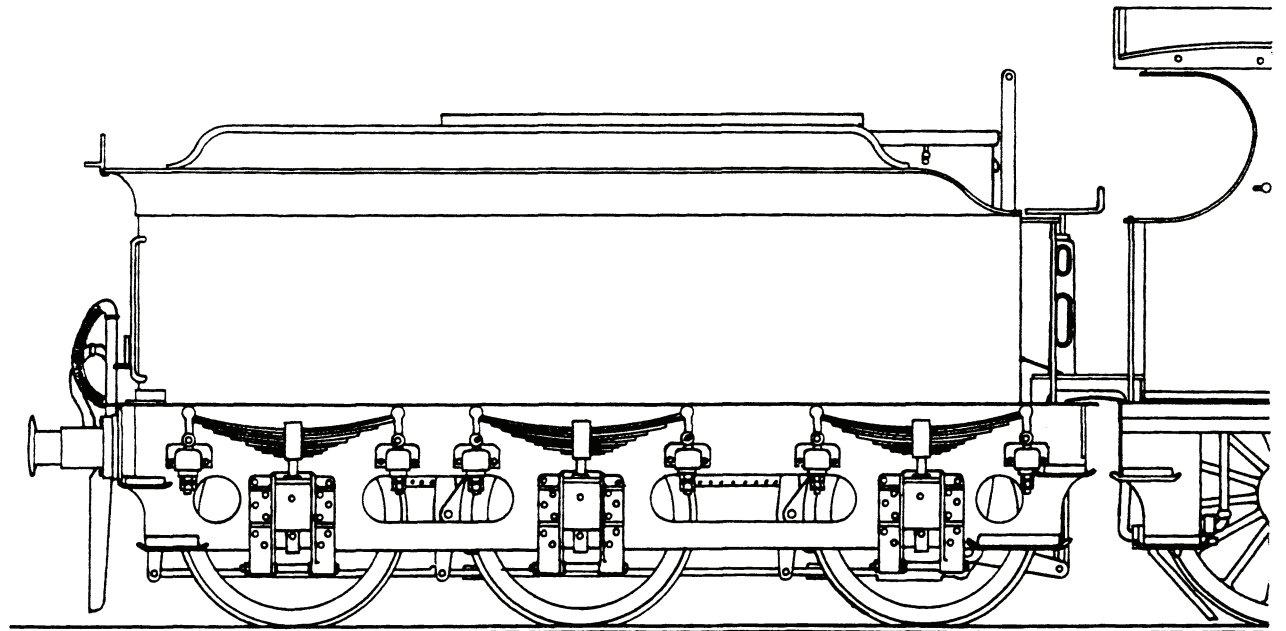
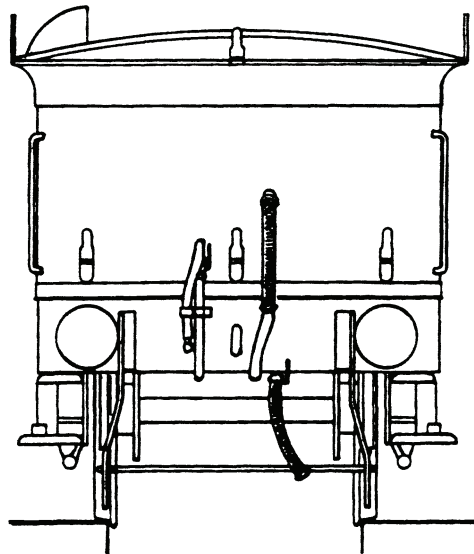
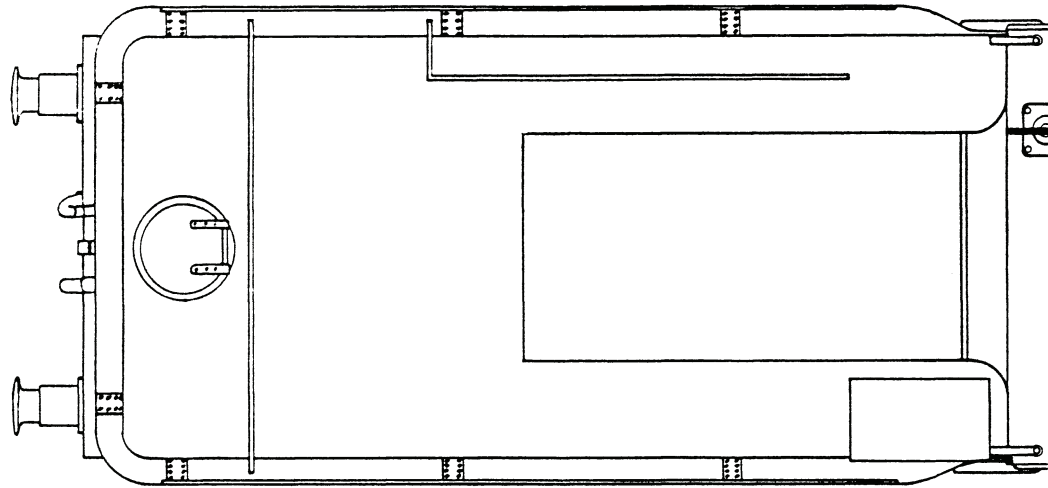
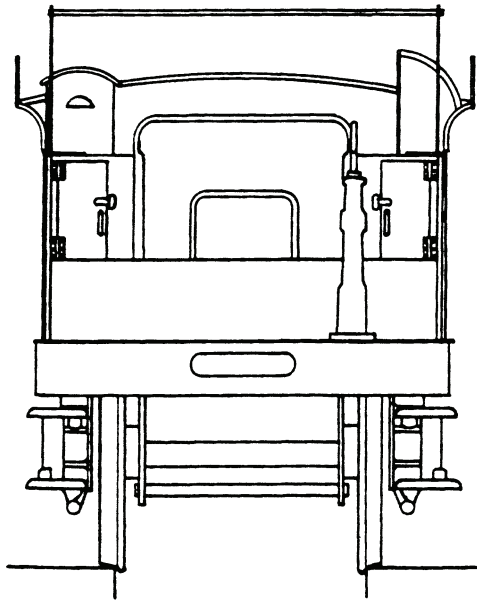
London & North Eastern Railway Class J15



Because of the photocopying process Drawings Are Only Approximately To Scale

Drawn By Jim McGeown

London & North Eastern Railway Class J15

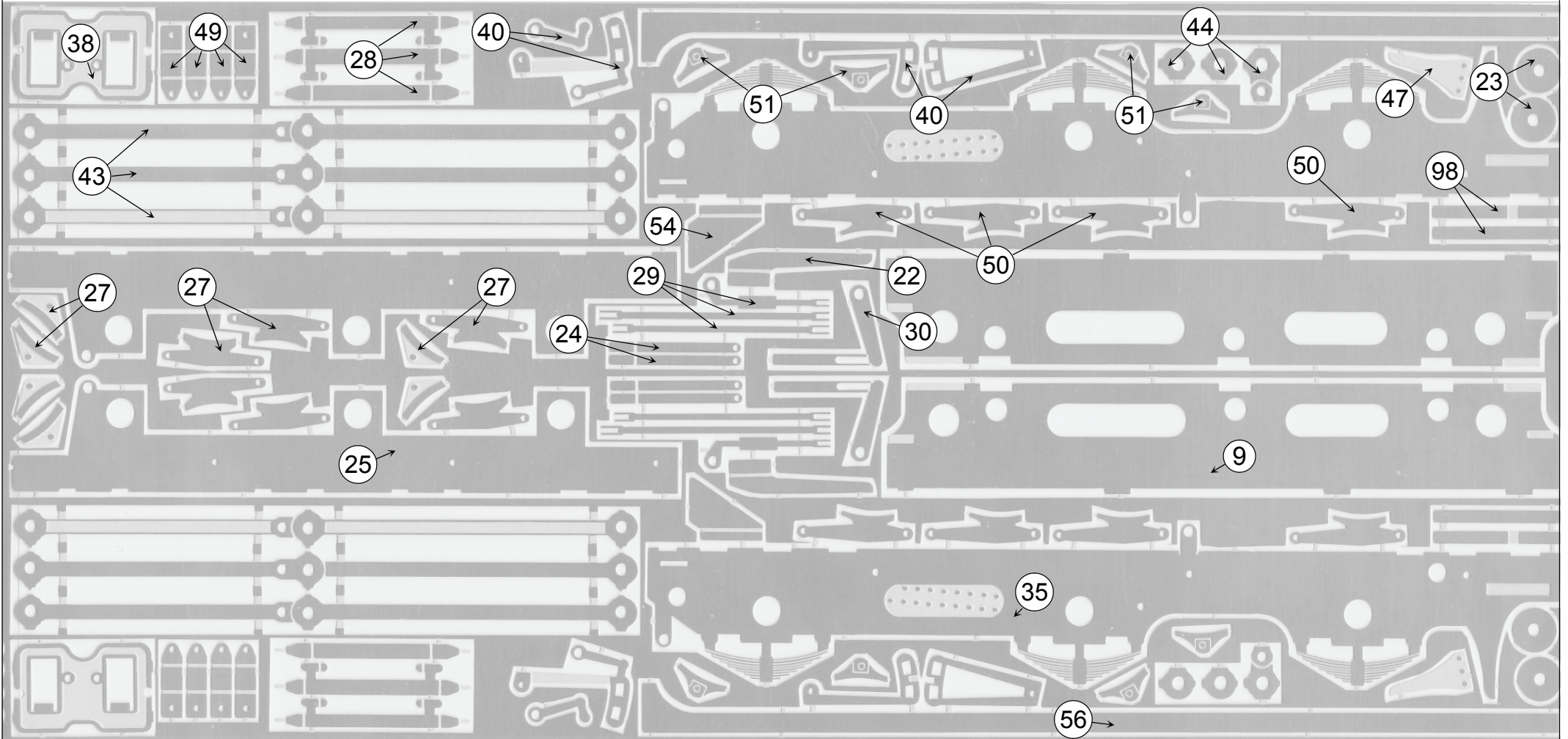


0 10

Because of the photocopying process Drawings Are Only Approximately To Scale

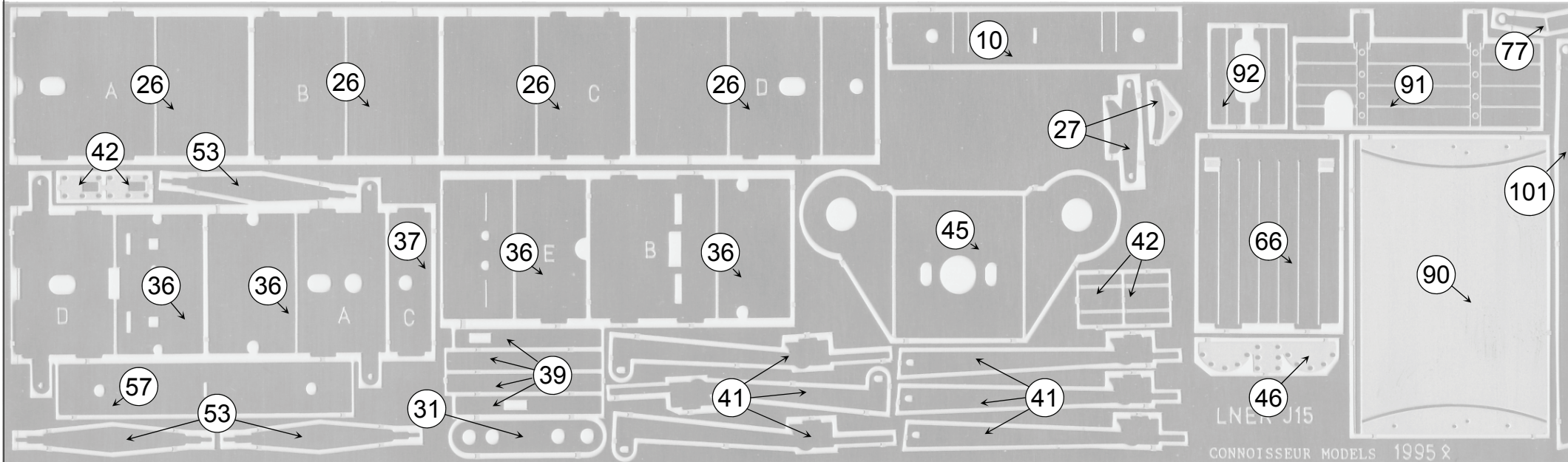
Drawn By Jim McGeown

LNER Class J15 Nickel Silver Fret

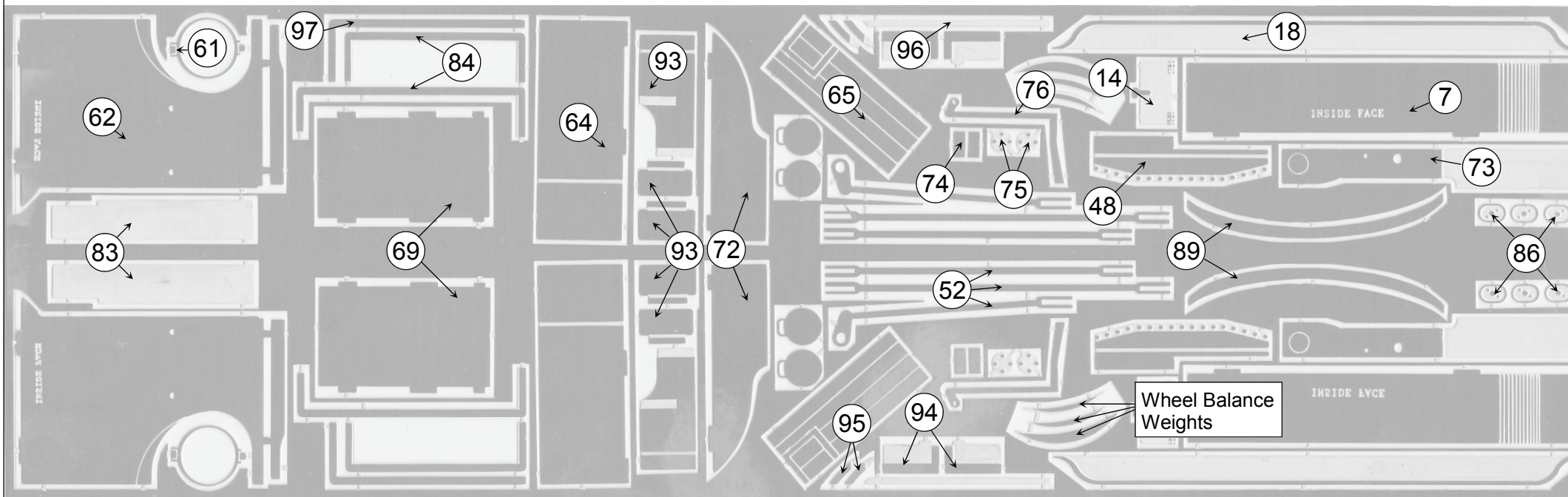


Half the parts on this fret are photographically mirrored to provide left and right hand components

LNCR Class J15 Nickel Silver Fret

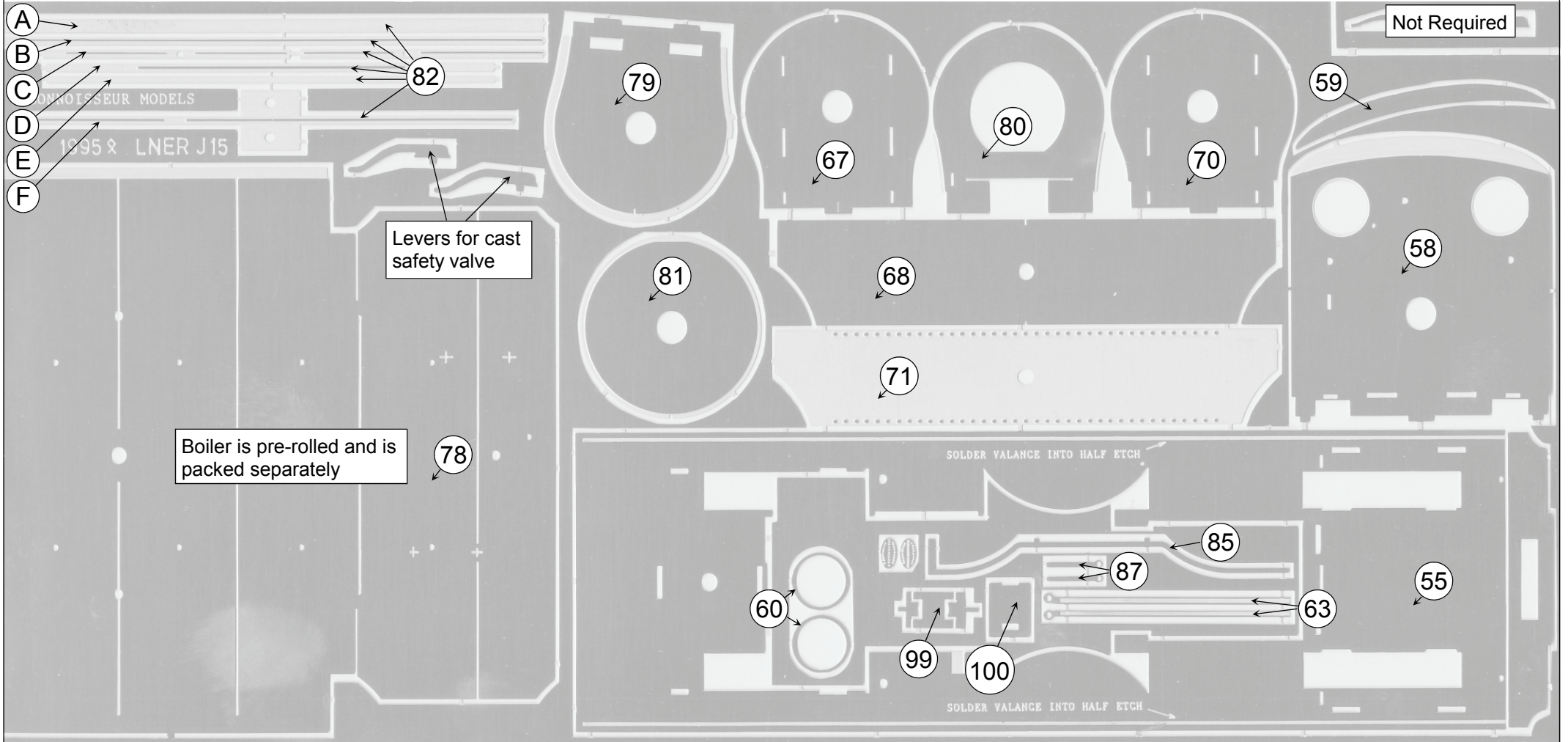


LNCR Class J15 Brass Fret

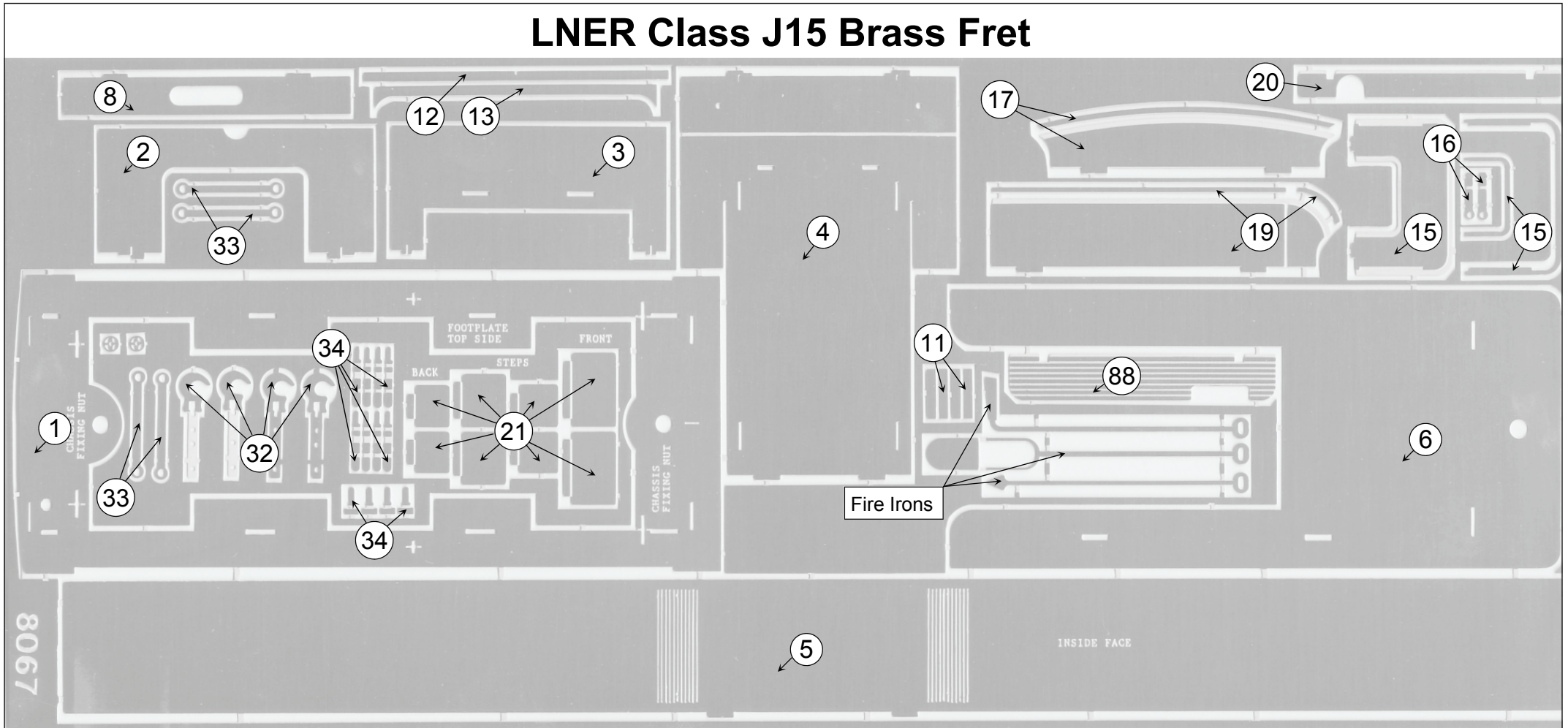


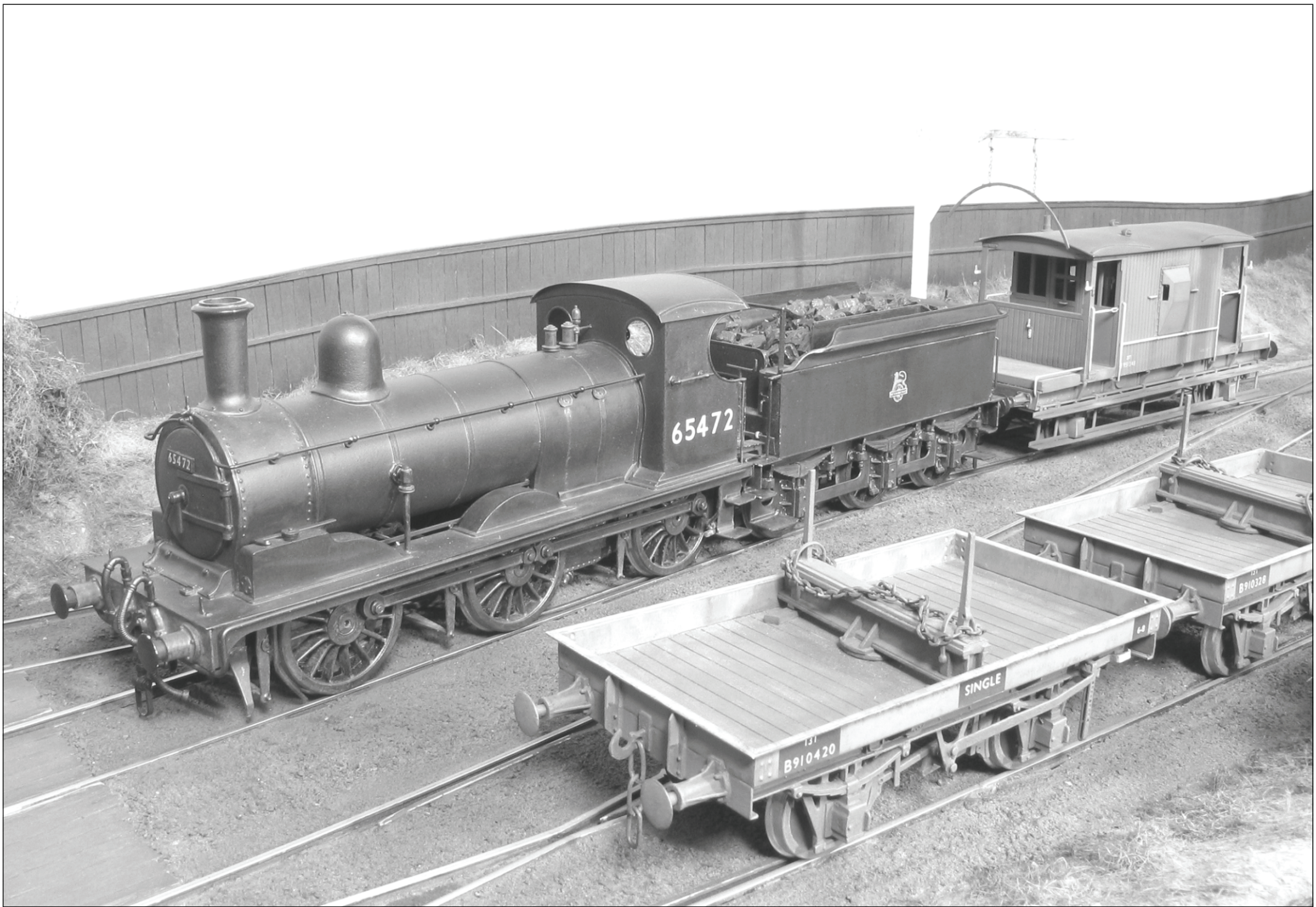
Half the parts on this fret are photographically mirrored to provide left and right hand components

LNER Class J15 Brass Fret



LNER Class J15 Brass Fret





65472

131
B910420

SINGLE

131
B910328

LNER Class J15 Parts Identification



Printed Circuit Board Strips
For Use With Wire Wiper Pickups



Turned brass
axle bearings
X 12



Split Pins for
handrail supports
X 20



6BA Brass Screws X 4
6BA Brass Nuts X 4



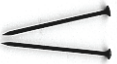
8BA Brass Screws X 2
8BA Brass Nuts X 2



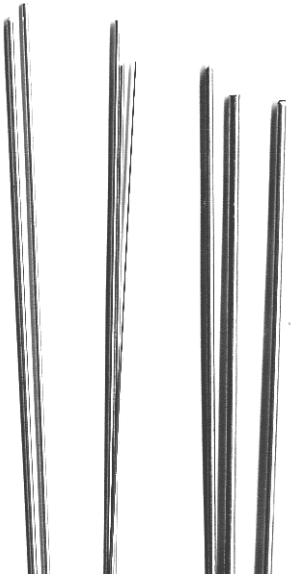
Regulator and hand
wheel etch X 1



Copper rod for
coupling rod joint
pin X 1



Track pins X 2

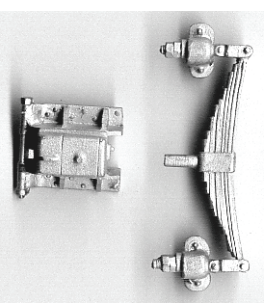


Selection of Wire and Rod

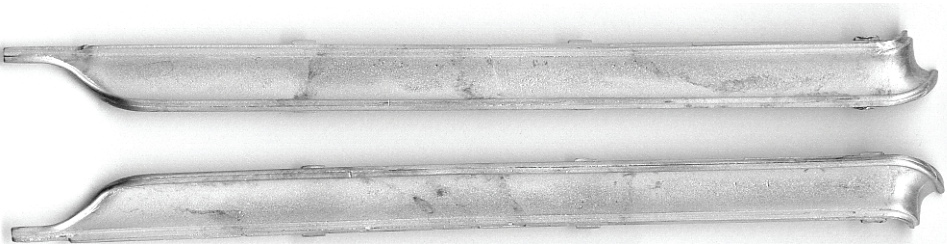
- 2mm dia Copper Rod X 8"
- 1.6mm dia Brass Rod X 6"
- 1.2mm dia Copper Rod X 9"
- 1.4mm dia Copper Rod X 12"
- 0.7mm dia Brass Wire 10" long X 6
- 0.9mm dia Brass Wire 10" long X 4
- 0.45mm dia Spring Brass Wire 10" long
(for use as wire wiper pickups) X 2



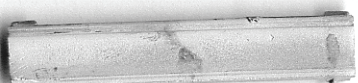
Electrical Wire
For Pickups.
1 X 18" Black
1 X 18" Red



Tender axle box and
spring X 6



Tender flares, left,
right & back X 1



Tender brake
standard X 1



Tender toolbox X 1



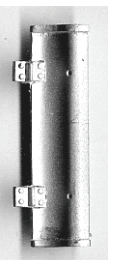
Reversing
reach rod
cover X 1



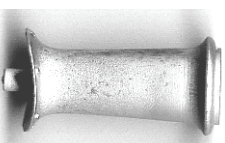
Back head
spacer X 1



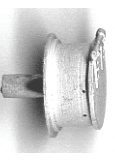
Back head
X 1



Smoke box front
valve cover (piano
lid) X 1



LNER chimney
tall X 1



Tender water
filler X 1



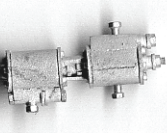
Loco vacuum
pipe X 1



Tender vacuum
pipe X 1

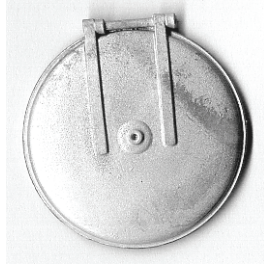


Cab
reverser
body X 1

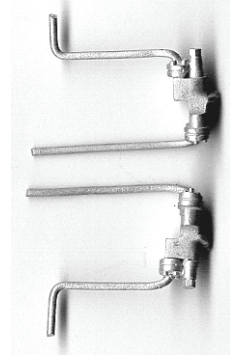


Westinghouse
pump X 1

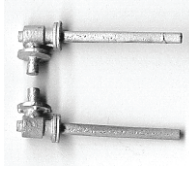
LNER Class J15 Parts Identification



Smoke box door X 1



Injectors left hand & right hand X 1



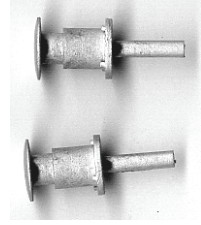
Clack pipes X 2



Alternative clack pipe tops to use with copper rod X 2



Cab gauges, large diameter X 2, small diameter X 1



Buffers X 4



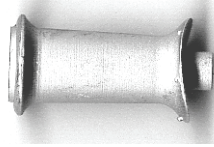
Cab reverser hand wheel X 1



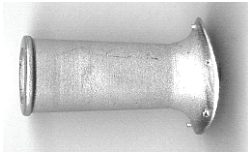
Smoke box door handle X 1



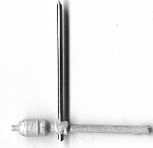
Ross pop safety valves X 2



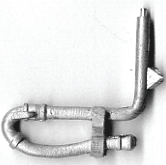
LNER chimney short X 1



Early stovepipe chimney X 1



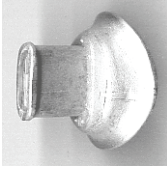
Whistle X 1



Air brake pipes X 2



Steam heat pipes X 2



Buffer packing thick X 2 thin X 2



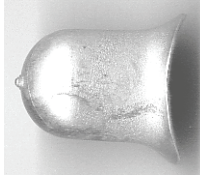
Coupling centres X 2



Firebox door shield X 1



Front splashers sandbox fillers X 2



Dome X 1

When I made the series of moulds to produce a full set of J15 castings I duplicated a number of the parts to cover casting failures and breakages. You should find that you have a number of spare castings and the quantities listed are the minimum required to complete the kit.

